

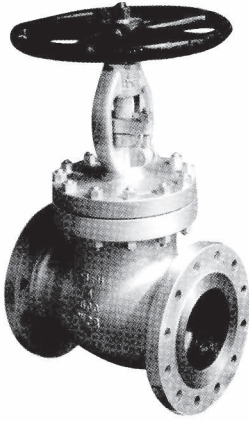


# Fumagalli S.p.A

Milano - Roma - Italy

**V A L V E S**

**ANSI Globe Valves  
Class 600**



**APPLICABLE STANDARD**

Basic Design: BS1873

Face To Face / End To End: ANSI B16.10;

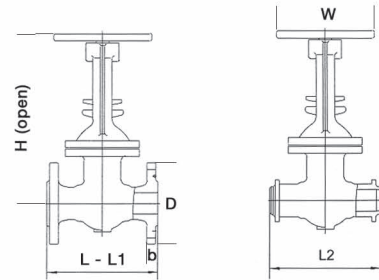
End Flanges:

2"–12": ANSI B16.5

Welding Ends: ANSI B16.25

Shell Wall Thickness:

2"–12": API600



**DIMENSIONS AND WEIGHTS**

\* Gear Operated

NOM SIZE	L/L2 RF/BW		L1 RTJ		D		b		H Open		W	Wt Kgs
	IN	MM	IN	MM	IN	MM	IN	MM	IN	MM		
2	11.50	292	11.63	295	6.50	165.1	1.00	25.4	16.75	425	250	57
2½	13.00	330	13.13	333	7.50	190.5	1.13	28.6	19.75	502	300	73
3	14.00	356	14.13	359	8.25	209.5	1.25	31.7	20.50	521	350	89
4	17.00	432	17.13	435	10.75	273.0	1.50	38.1	24.38	620	450	149
6	22.00	559	22.13	562	14.00	355.6	1.88	47.6	34.88	886	560	417
8	26.00	660	26.13	663	16.50	419.1	2.19	55.6	36.69	932	630	542
10*	31.00	788	31.13	790	20.00	508.0	2.50	63.5	41.00	1040	GO	700
12*	33.00	838	33.13	841	22.00	558.8	2.62	66.7	50.38	1280	GO	900

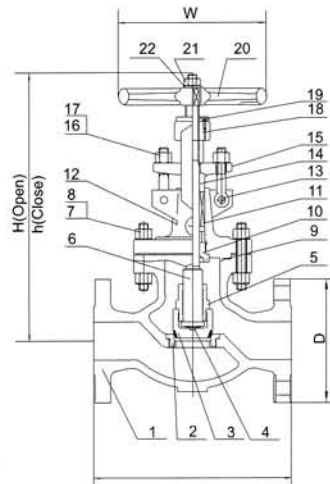


# Fumagalli S.p.A

Milano - Roma - Italy

ANSI Globe Valves  
Class 600

V A L V E S



## BILL OF MATERIALS & PARTS

Part No.	Part Name	ASTM Specifications (Specs. - Grades/Types)				
		A216	A352	A217		A351
		WCB	LCC	WC6	C5	CF8M
1	Body	A216-WCB	A352-LCC	A217-WC6	A217-C5	A351-CF8M
2	Seat Ring	A105, LF2, 316 OR 304				
	Seat Ring Surface	13CR, HF(STELLITE), 316, 304, Monel				
3	Disc	A216-WCB	A352-LCC	A217-WC6	A217-C5	A351-CF8M
	Disc Sealing Surface	13CR, HF(STELLITE), 316, 304, Monel				
4	Disc Trust Plate	13Cr, 316 OR 304				
5	Disc Nut	13Cr, 316 OR 304				
6	Stem	13CR, 316 OR 304, 17-4PH, Monel				
7	Bonnet Bolt Nut	A194-2H	A194-4	A194-2H	A194-4	A194-8
8	Bonnet Bolt	A193-B7	A320-L7	A193-B7	A193-B16	A193-B8
9	Gasket	Ring Joint-Iron				
10	Bonnet Bushing	13Cr, 316 OR 304				
11	Gland Packing	Braided Graphite & Die Formed Graphite Ring				
12	Bonnet	A216-WCB	A352-LCC	A217-WC6	A217-C5	A351-CF8M
13	Eye Bolt Pins	13Cr, 316 OR 304				
14	Gland	13Cr, 316 OR 304				
15	Gland Flange	A216-WCB	A352-LCC	A217-WC6	A217-C5	A351-CF8M
16	Gland Eye Bolts	A193-B7	A320-L7	193-B16		A193-B8
17	Eye Bolt Nuts	A194-2H	A194-7M	A194-2H		A194-8
18	Yoke Sleeve	ASTM A439 GR D2C				
19	Screw	Carbon Steel				316
20	Handwheel	Malleable Iron				
21	Handwheel Nut	Carbon Steel				316
22	Backing Ring	Carbon Steel				316