

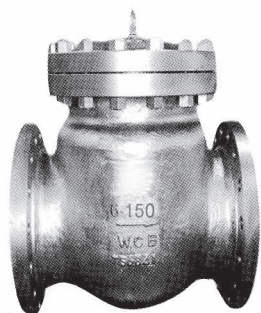


# Fumagalli S.p.A

Milano - Roma - Italy

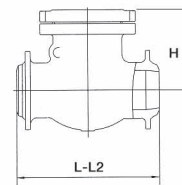
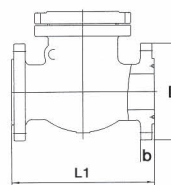
**V A L V E S**

**ANSI Swing Check Valves  
Class 150**



**APPLICABLE STANDARD**

Basic Design: BS1868,API6D  
 Face To Face / End To End: ANSI B16.10;  
 End Flanges:  
     2"–24": ANSI B16.5  
     26"–36": MSS-SP44  
 Welding Ends: ANSI B16.25  
 Shell Wall Thickness:  
     2"–24": API600  
     26"–36": Manufacturer's standard



**DIMENSIONS AND WEIGHTS**

NOM SIZE	L/L2		L1		D		b		H		Wt Kgs
	RF/BW		RTJ								
	IN	MM	IN	MM	IN	MM	IN	MM	IN	MM	
2	8.00	203	8.50	216	6.00	152.4	0.62	16	6.50	165	19
2½	8.50	216	9.00	229	7.00	177.8	0.69	18	7.00	178	26
3	9.50	241	10.0	254	7.50	190.5	0.75	19	7.30	186	29
4	11.5	292	12.0	305	9.00	228.6	0.94	24	8.50	217	48
5	13.0	330	13.5	343	10.0	254.0	0.94	24	9.06	230	69
6	14.0	356	14.5	368	11.0	279.4	1.00	25	10.5	266	77
8	19.5	495	20.0	508	13.5	342.9	1.12	28	12.5	318	133
10	24.5	622	25.0	635	16.0	406.4	1.19	30	14.5	368	266
12	27.5	698	28.0	711	19.0	482.6	1.25	32	16.0	406	347
14	31.0	787	31.5	800	21.0	533.4	1.38	35	17.0	432	451
16	34.0	864	34.5	876	23.5	596.9	1.44	37	19.0	483	556
18	38.5	978	39.0	991	25.0	635.0	1.56	40	23.6	600	784
20	38.5	978	39.0	991	27.5	698.5	1.69	43	26.0	660	835
24	51.0	1295	51.5	1308	32.0	812.8	1.88	48	29.1	740	1580
30	60.0	1524	60.5	1537	38.7	982.9	2.94	75	38.6	980	2120
36	77.0	1955	77.5	1968	46.0	1168	3.56	90	40.8	1035	3344

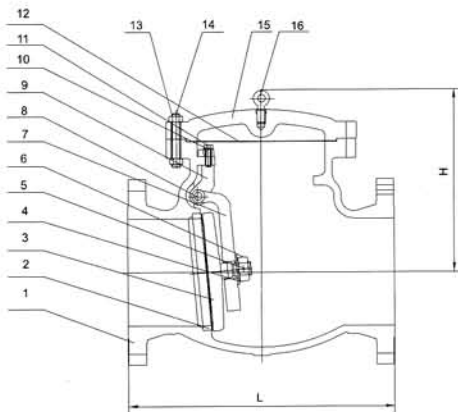


# Fumagalli S.p.A

Milano - Roma - Italy

ANSI Swing Check Valves  
Class 150

**V A L V E S**



## BILL OF MATERIALS & PARTS

Part NO.	Part Name	ASTM Specifications (Specs. – Grades/Types)				
		A216	A352	A217		A351
		WCB	LCC	WC6	C5	CF8M
1	Body	A216-WCB	A352-LCC	A217-WC6	A217-C5	A351-CF8M
2	Seat Ring	A105 , 316 OR 304				
	Seat Ring Surface	13Cr , HF(STELLITE), 316 OR 304				
3	Disc	A216-WCB	A352-LCC	A217-WC6	A217-C5	A351-CF8M
	Disc Sealing Surface	13Cr , HF(STELLITE), 316 OR 304				
4	Washer	13Cr , 316 OR 304				
5	Pin	13Cr , 316 OR 304				
6	Disc Nut	13Cr , 316 OR 304				
7	Hinge	A216-WCB	A352-LCC	A217-WC6	A217-C5	A351-CF8M
8	Hinge Pin	Stainless Steel				
9	Bearing Bracket	A216-WCB	A352-LCC	A217-WC6	A217-C5	A351-CF8M
10	Spring Washer	Stainless Steel				
11	Hex, Bolt	Stainless Steel				
12	Gasket	Soft Iron, Spiral Wound				
13	Cover Bolt	A193-B7	A320-L7M	A193-B7/A193-B16		A193-B8
14	Cover Bolt Nut	A194-2H	A194-7M	A194-4		A194-8
15	Cover	A216-WCB	A352-LCC	A217-WC6	A217-C5	A351-CF8M
16	Eye Bolt	A181				