

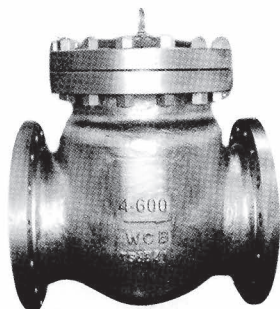


# Fumagalli S.p.A

Milano - Roma - Italy

**V A L V E S**

ANSI Swing Check Valves  
Class 600



#### APPLICABLE STANDARD

Basic Design: BS1868,API6D

Face To Face / End To End: ANSI B16.10;

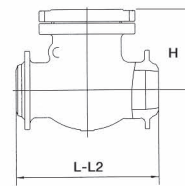
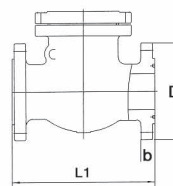
End Flanges:

2"–24": ANSI B16.5

Welding Ends: ANSI B16.25

Shell Wall Thickness:

2"–24": API600



#### DIMENSIONS AND WEIGHTS

| NOM<br>SIZE | L/L2  |      | L1    |      | D     |       | b    |       | H     |     | Wt<br>Kgs |
|-------------|-------|------|-------|------|-------|-------|------|-------|-------|-----|-----------|
|             | RF/BW |      | RTJ   |      |       |       |      |       |       |     |           |
|             | IN    | MM   | IN    | MM   | IN    | MM    | IN   | MM    | IN    | MM  |           |
| 2           | 11.5  | 292  | 11.63 | 295  | 6.50  | 165.1 | 1.00 | 25.4  | 7.38  | 187 | 52        |
| 2½          | 13.0  | 330  | 13.13 | 333  | 7.50  | 190.5 | 1.13 | 28.6  | 8.50  | 216 | 63        |
| 3           | 14.0  | 356  | 14.13 | 359  | 8.25  | 209.5 | 1.25 | 31.7  | 10.95 | 278 | 75        |
| 4           | 17.0  | 432  | 17.13 | 435  | 10.75 | 273.0 | 1.50 | 38.1  | 12.44 | 316 | 122       |
| 6           | 22.0  | 559  | 22.13 | 562  | 14.00 | 355.6 | 1.88 | 47.6  | 15.75 | 400 | 227       |
| 8           | 26.0  | 660  | 26.13 | 664  | 16.50 | 419.1 | 2.19 | 55.6  | 17.0  | 432 | 346       |
| 10          | 31.0  | 788  | 31.13 | 791  | 20.00 | 508.0 | 2.50 | 63.5  | 19.0  | 483 | 628       |
| 12          | 33.0  | 838  | 33.13 | 841  | 22.00 | 558.8 | 2.62 | 66.7  | 20.0  | 508 | 796       |
| 14          | 35.0  | 889  | 35.13 | 892  | 23.75 | 603.2 | 2.75 | 69.8  | 22.5  | 572 | 892       |
| 16          | 39.0  | 990  | 39.13 | 994  | 27.00 | 685.8 | 3.00 | 76.2  | 26.0  | 660 | 1200      |
| 18          | 43.0  | 1092 | 43.13 | 1095 | 28.25 | 742.9 | 3.25 | 82.5  | 28.75 | 730 | 1600      |
| 20          | 47.0  | 1194 | 47.25 | 1200 | 32.00 | 812.8 | 3.50 | 88.9  | 31.5  | 800 | 2420      |
| 24          | 55.0  | 1397 | 55.38 | 1407 | 37.00 | 939.8 | 4.00 | 102.0 | 35.5  | 900 | 3150      |

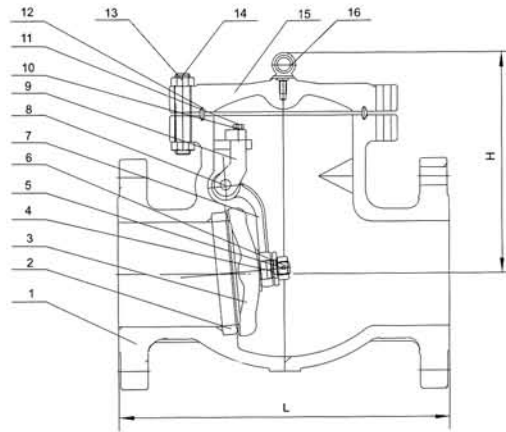


# Fumagalli S.p.A

Milano - Roma - Italy

ANSI Swing Check Valves  
Class 600

**V A L V E S**



## BILL OF MATERIALS & PARTS

| Part NO. | Part Name            | ASTM Specifications (Specs. – Grades/Types) |          |                  |         |           |
|----------|----------------------|---|----------|------------------|---------|-----------|
|          |                      | A216  | A352     | A217             |         | A351      |
|          |                      | WCB   | LCC      | WC6              | C5      | CF8M      |
| 1        | Body                 | A216-WCB                                    | A352-LCC | A217-WC6         | A217-C5 | A351-CF8M |
| 2        | Seat Ring            | A105, 316 OR 304                            |          |                  |         |           |
|          | Seat Ring Surface    | 13Cr, HF(STELLITE), 316 OR 304              |          |                  |         |           |
| 3        | Disc                 | A216-WCB                                    | A352-LCC | A217-WC6         | A217-C5 | A351-CF8M |
|          | Disc Sealing Surface | 13Cr, HF(STELLITE), 316 OR 304              |          |                  |         |           |
| 4        | Washer               | 13Cr, 316 OR 304                            |          |                  |         |           |
| 5        | Pin                  | 13Cr, 316 OR 304                            |          |                  |         |           |
| 6        | Disc Nut             | 13Cr, 316 OR 304                            |          |                  |         |           |
| 7        | Hinge                | A216-WCB                                    | A352-LCC | A217-WC6         | A217-C5 | A351-CF8M |
| 8        | Hinge Pin            | Stainless Steel                             |          |                  |         |           |
| 9        | Bearing Bracket      | A216-WCB                                    | A352-LCC | A217-WC6         | A217-C5 | A351-CF8M |
| 10       | Spring Washer        | Stainless Steel                             |          |                  |         |           |
| 11       | Hex, Bolt            | Stainless Steel                             |          |                  |         |           |
| 12       | Gasket               | Ring Joint-Iron                             |          |                  |         |           |
| 13       | Cover Bolt           | A193-B7                                     | A320-L7M | A193-B7/A193-B16 |         | A193-B8   |
| 14       | Cover Bolt Nut       | A194-2H                                     | A194-7M  | A194-4           |         | A194-8    |
| 15       | Cover                | A216-WCB                                    | A352-LCC | A217-WC6         | A217-C5 | A351-CF8M |
| 16       | Eye Bolt             | A181  |          |                  |         |           |